

**READY FOR
OCCUPANCY**

CLICK TO VIEW VIDEO



PALISADE ANAHEIM

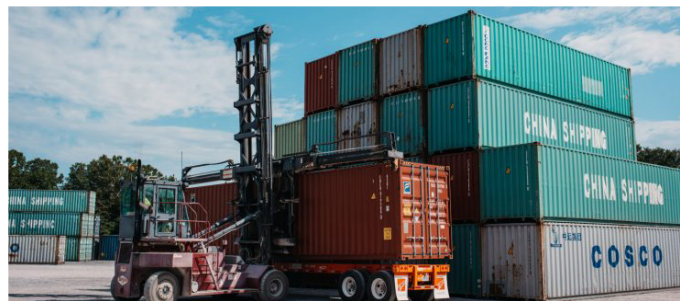
LOGISTICS CENTER

1477 NORTH JEFFERSON STREET | ANAHEIM | CALIFORNIA

3.40-7.75 ACRE LOGISTICS | VEHICLE PARKING STORAGE SITE FOR LEASE



**NORTH PALISADE
PARTNERS**



Voit

REAL ESTATE SERVICES



**HEFNER
VERNICK
TEAM**

EXCLUSIVELY MARKETED BY:

**MIKE HEFNER, SIOR
EXECUTIVE VICE PRESIDENT**

Lic: 00857351
(714) 935-2331
mhefner@voitco.com

**MIKE VERNICK, CCIM, SIOR
SENIOR VICE PRESIDENT**

Lic: 01420885
(714) 935-2354
mvernick@voitco.com

2400 E. Katella Avenue | Suite 750 | Anaheim, California 92806 | Lic #01991785 | www.VoitCo.com

SITE PLAN



3.40-775 ACRE
VEHICLE PARKING/
EXTERIOR STORAGE SITE



29 TRAILER
STALLS PER ACRE



2 SITE
ENTRANCES



FULLY
PAVED W/ 7" OF CONCRETE



2,607 SF
OFFICE BUILDING
WITH RESTROOMS



225
TRUCK TRAILER
PARKING STALLS



PARKING STALLS
STRIPING TO SUIT



FULLY
FENCED



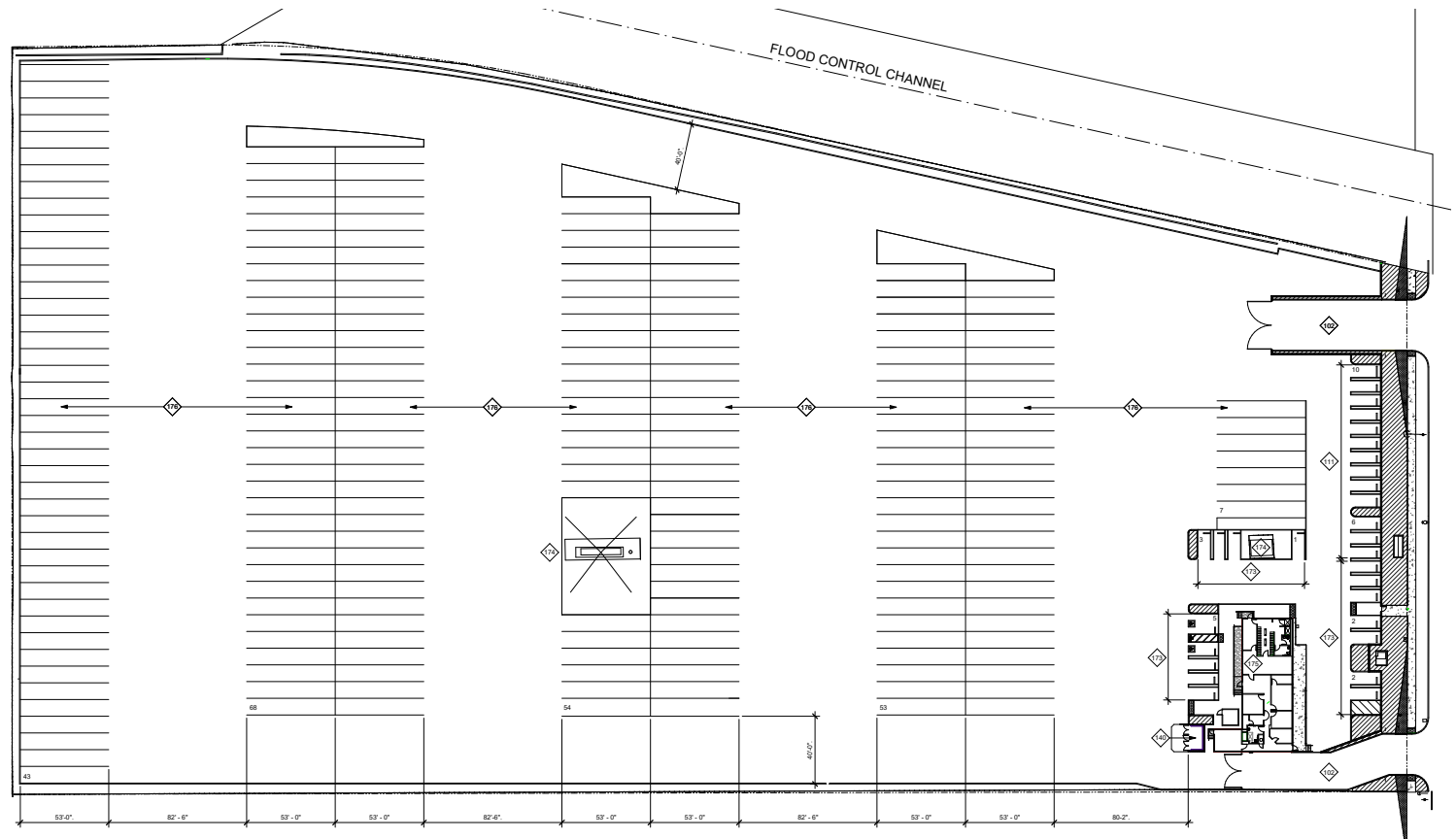
FULLY
LIGHTED



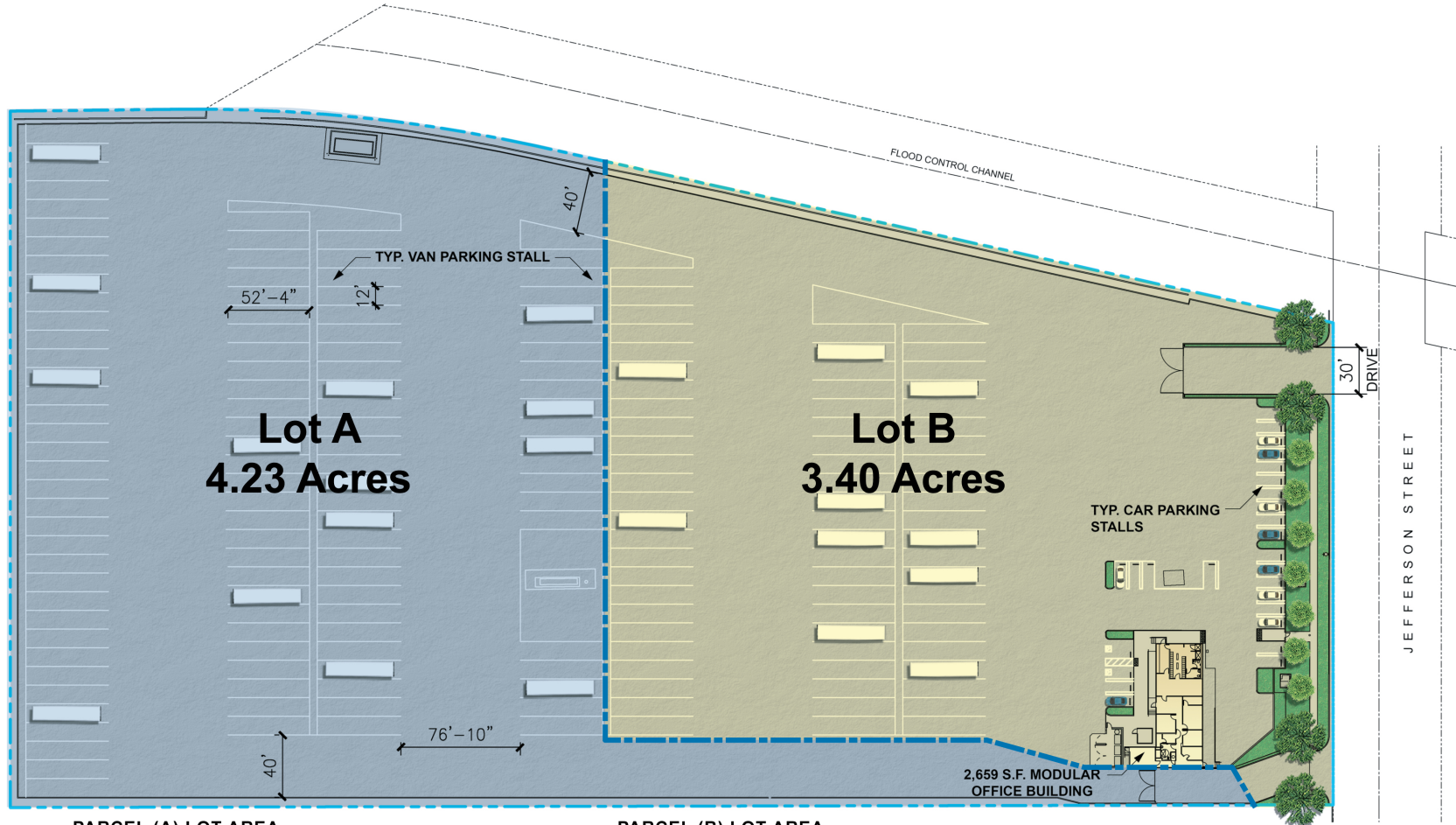
BUILD-TO-SUIT
STRUCTURES POSSIBLE



DELIVERED
WITH A TRAILER
PARKING CUP



SITE PLAN DIVISIBLE SECTIONS



PARCEL (A) LOT AREA

184,505 S.F.

PARKING PROVIDED:

TRAILER PARKING = 111 STALLS
CAR PARKING = 0 STALLS

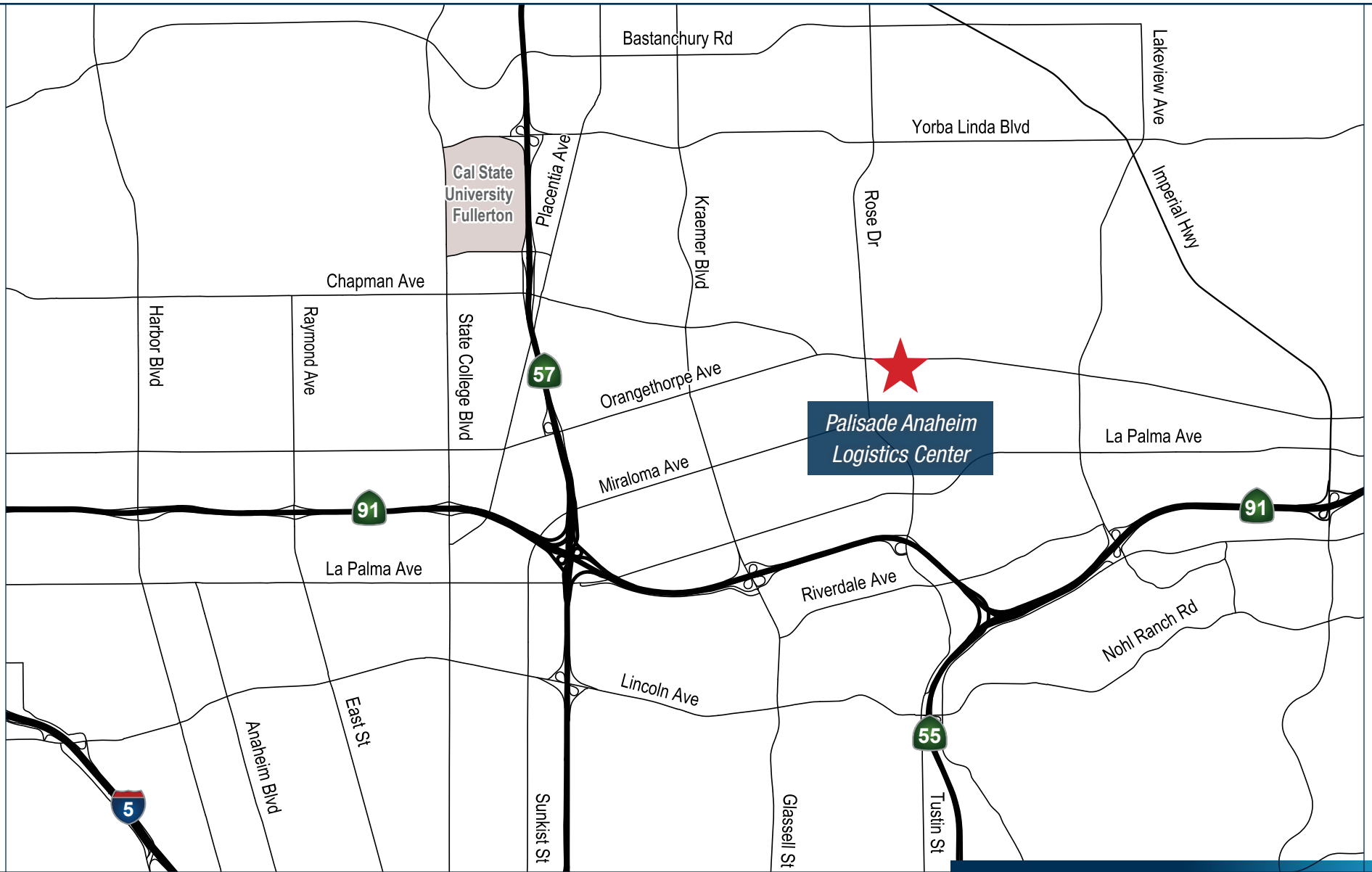
PARCEL (B) LOT AREA

148,201 S.F.

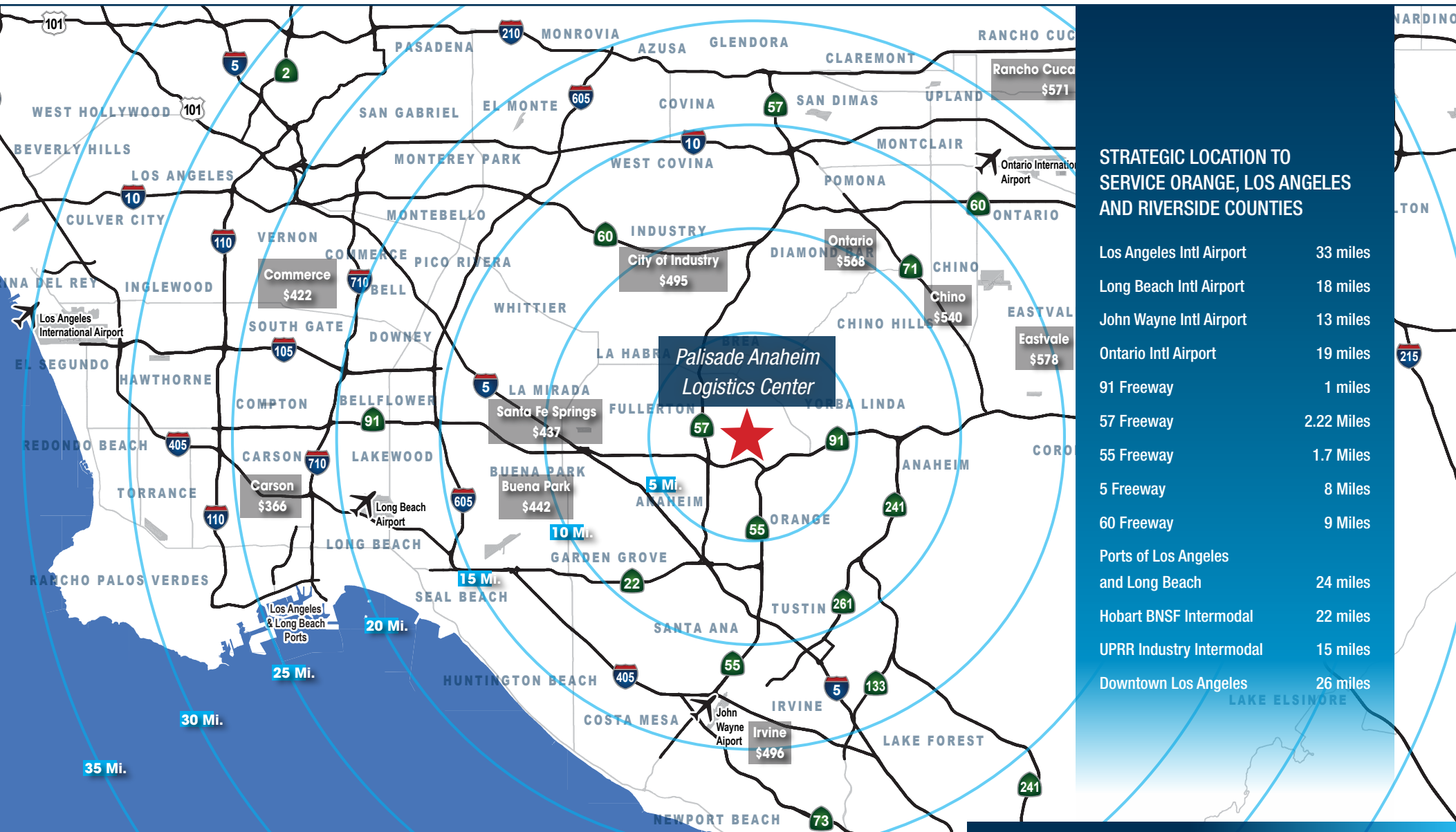
PARKING PROVIDED:

TRAILER PARKING = 69 STALLS
CAR PARKING = 26 STALLS

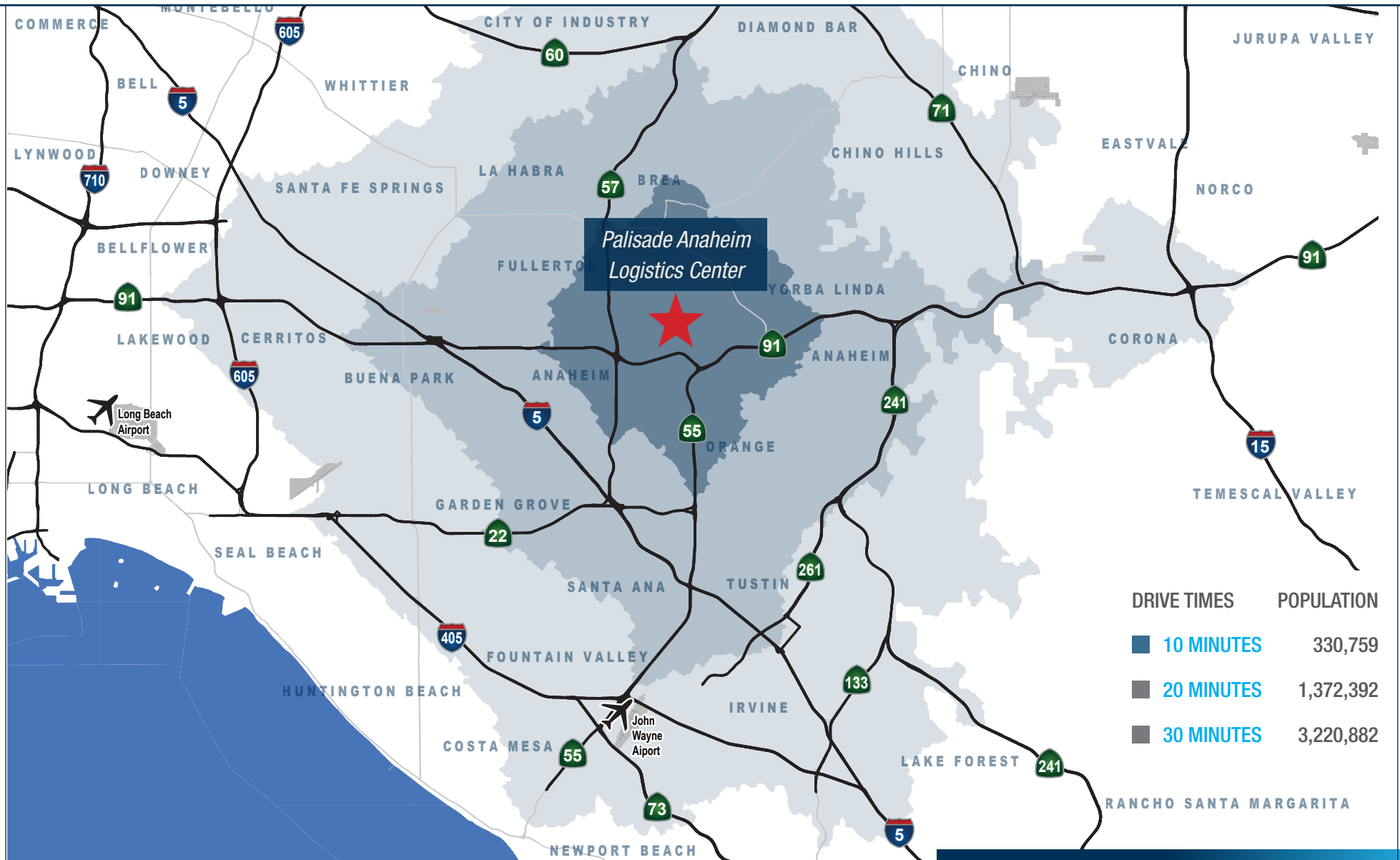
LOCATION



KEY TRANSPORTATION ACCESS MAP



DRIVE TIMES & POPULATION DENSITY MAP





PALISADE ANAHEIM

1477 NORTH JEFFERSON STREET | ANAHEIM | CALIFORNIA

3.40-7.75 ACRE LOGISTICS | VEHICLE PARKING STORAGE SITE FOR LEASE

LOGISTICS CENTER



NORTH PALISADE
PARTNERS

Voit

REAL ESTATE SERVICES



HEFNER
VERNICK
TEAM

EXCLUSIVELY MARKETING BY:

MIKE HEFNER, SIOR
EXECUTIVE VICE PRESIDENT
Lic: 00857351
(714) 935-2331
mhefner@voitco.com

MIKE VERNICK, CCIM, SIOR
SENIOR VICE PRESIDENT
Lic: 01420885
(714) 935-2354
mvernick@voitco.com