

FOR LEASE

±144,000 SQ. FT. INDUSTRIAL BUILDING

3125 E. CORONADO ST
ANAHEIM, CA



A Quality Asset Owned By:

nuveen
REAL ESTATE

PROPERTY FEATURES

- ±144,000 Square Foot Industrial Building
- Large Fenced Yard Possible
- Major Street Visibility
- Drive Around Building
- ±19,000 Sq. Ft. of Office Space/Showroom (can be demolished to suit)
- 18'- 22' Warehouse Clearance
- Six (6) Dock High Truckwells with Dock Levelers
- Eleven (11) Grade Level Loading Doors
- 6,000 AMPS 277/480 Volt Power (verify)
- 2.2:1 Parking (323 Stalls)
- Fire Sprinklered (.4 GPM / 3,000)
- Zoning Supports Wide Range of Uses
- Excellent Access to 91, 57 and 55 Freeways
- Low Net Expenses of \$0.22 PSF
- Strategic Central North Orange County Location
- Motion Sensor Warehouse Lighting
- Institutionally Owned and Managed Property



MIKE HEFNER, SIOR
Executive Vice President
714.935.2331
mhefner@voitco.com
Lic. #00857352



MIKE VERNICK, CCIM, SIOR
Senior Vice President
714.935.2354
mvernick@voitco.com
Lic. #01420885

Voit
REAL ESTATE SERVICES

HV HEFNER
VERNICK
TEAM

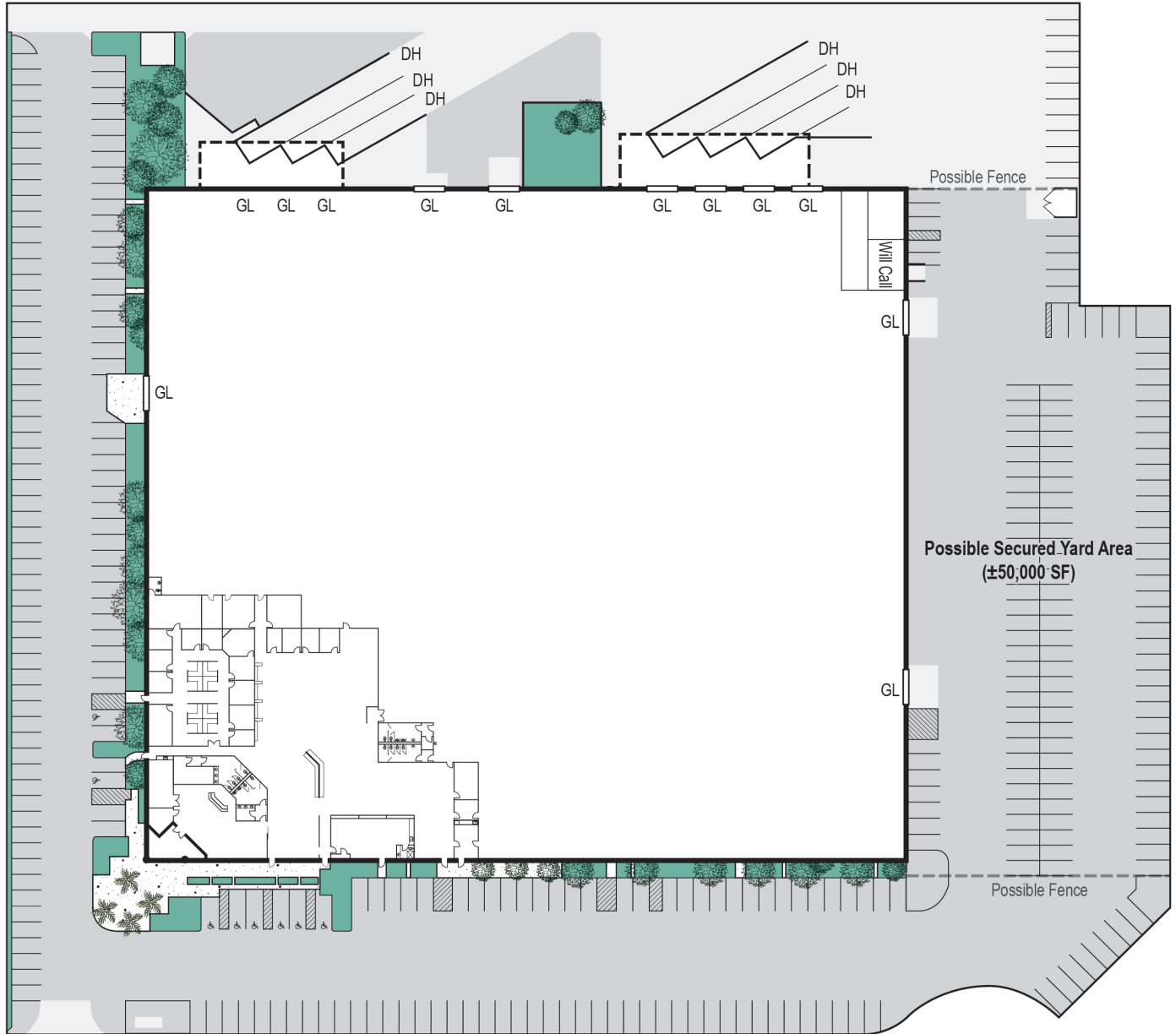
2400 E. Katella Avenue, Suite 750, Anaheim, CA 92806

FOR LEASE

±144,000 SQ. FT. INDUSTRIAL BUILDING

3125 E. CORONADO ST

ANAHEIM, CA



CORONADO ST

*Site plan not to scale.

MIKE HEFNER, SIOR

Executive Vice President, Partner
714.935.2331
mhefner@voitco.com
Lic. # 00857352

MIKE VERNICK, CCIM, SIOR

Senior Vice President, Partner
714.935.2354
mvernick@voitco.com
Lic. # 01420885

Voit
REAL ESTATE SERVICES



**HEFNER
VERNICK
TEAM**

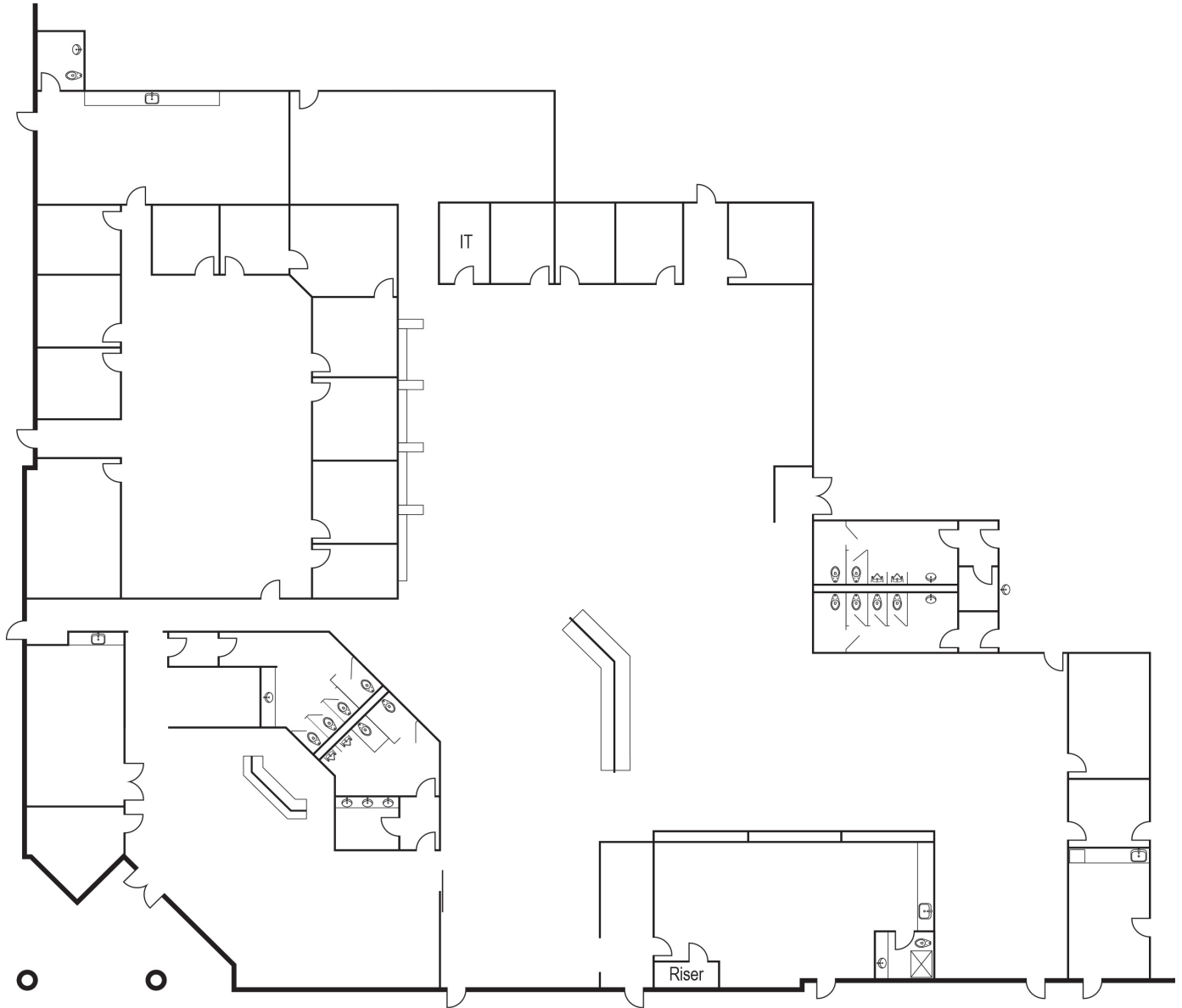
2400 E. Katella Avenue
Suite 750
Anaheim, CA 92806
www.VoitCo.com

FOR LEASE

±144,000 SQ. FT. INDUSTRIAL BUILDING

3125 E. CORONADO ST

ANAHEIM, CA



*Plan not to scale.

MIKE HEFNER, SIOR

Executive Vice President, Partner
714.935.2331
mhefner@voitco.com
Lic. # 00857352

MIKE VERNICK, CCIM, SIOR

Senior Vice President, Partner
714.935.2354
mvernick@voitco.com
Lic. # 01420885

Voit
REAL ESTATE SERVICES



2400 E. Katella Avenue
Suite 750
Anaheim, CA 92806
www.VoitCo.com

FOR LEASE

±144,000 SQ. FT. INDUSTRIAL BUILDING

3125 E. CORONADO ST
ANAHEIM, CA



MIKE HEFNER, SIOR
Executive Vice President, Partner
714.935.2331
mhefner@voitco.com
Lic. # 00857352

MIKE VERNICK, CCIM, SIOR
Senior Vice President, Partner
714.935.2354
mvernick@voitco.com
Lic. # 01420885

Voit
REAL ESTATE SERVICES



2400 E. Katella Avenue
Suite 750
Anaheim, CA 92806
www.VoitCo.com