

FOR LEASE | 5,065 Sq. Ft.

755 Debra Lane, Anaheim

Voit

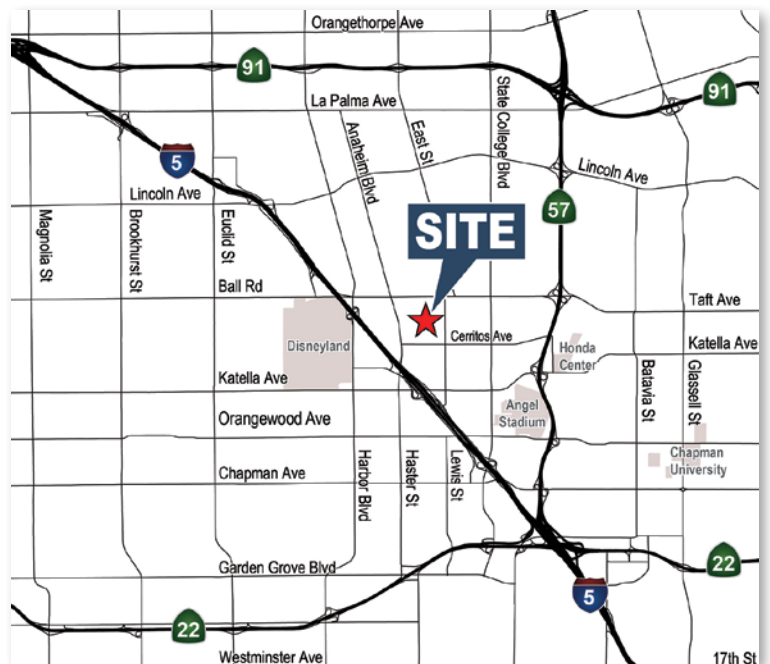
REAL ESTATE SERVICES



Property Features

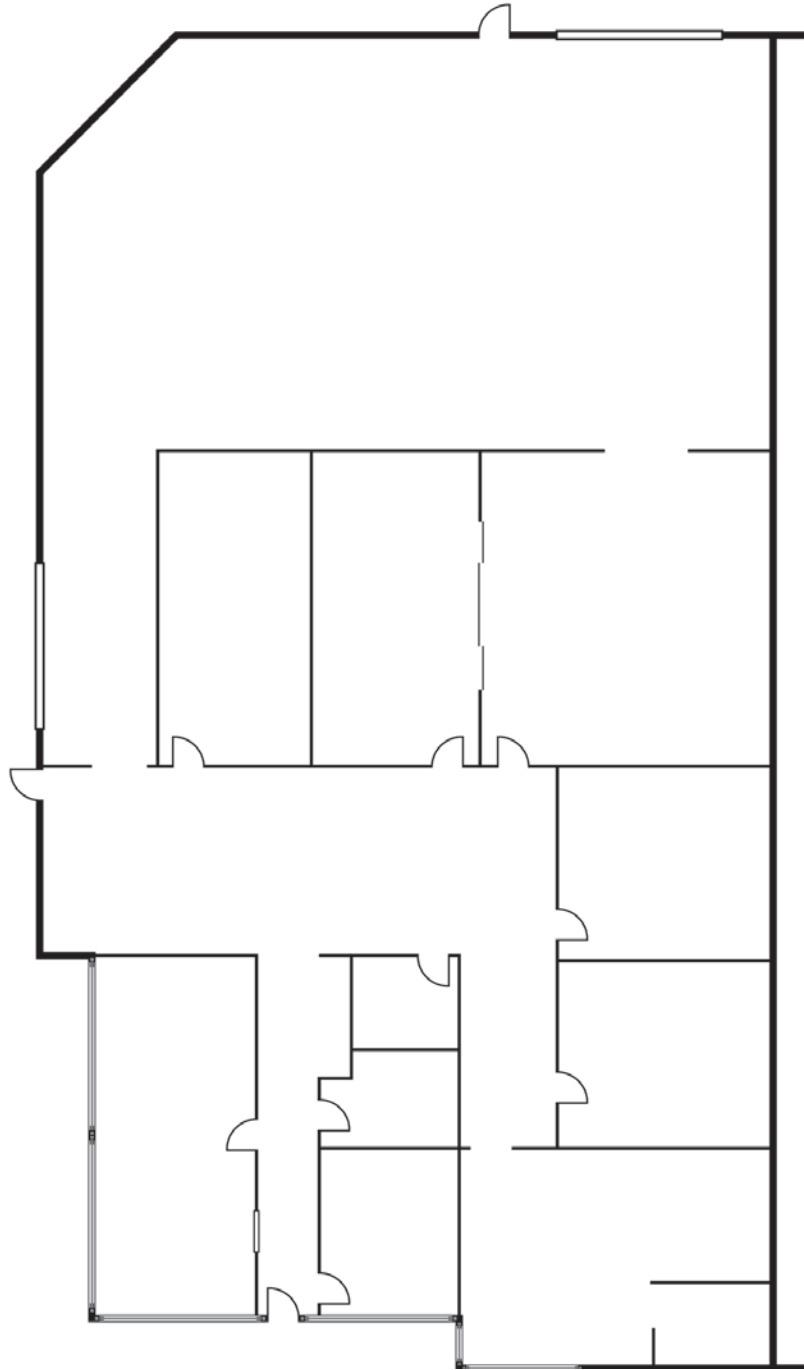
- ±2,812 Sq. Ft. of Office Area
- Fenced Yard Area
- 400 Amps of Power
- Fire Sprinklers
- 2 Ground Level Doors
- Excellent Freeway Access
- 16 Feet of Warehouse Clearance
- 2.8:1000 Parking Ratio

Mike Hefner, SIOR
Executive Vice President
714.935.2331
mhefner@voitco.com
Lic #00857352



FOR LEASE | 5,065 Sq. Ft.

755 Debra Lane, Anaheim



Mike Hefner, SIOR
Executive Vice President
714.935.2331
mhefner@voitco.com
Lic #00857352

Voit
REAL ESTATE SERVICES

2400 E. Katella Avenue, Suite 750, Anaheim, CA 92806 • 714.978.7880 • 714.978.9431 Fax • Lic #01333376 | www.voitco.com