

FOR LEASE ±26,094 SF

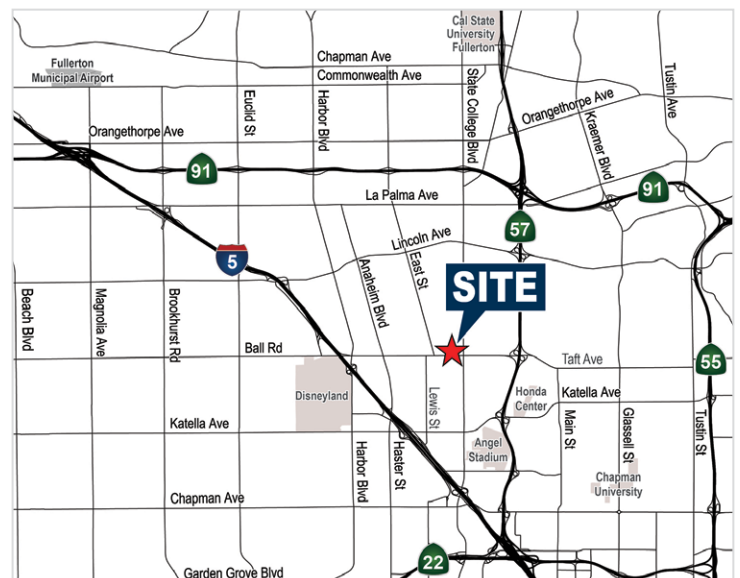
FREE STANDING INDUSTRIAL BUILDING ON 2.03 ACRES OF LAND

1617 E. Ball Road, Anaheim, CA



Property Feature

- Major Street Exposure and Signage
- Approximately 5,094 Sq. Ft. Office Area
- Potential Vocational School Location
- Retail Showroom Potential
- 800 AMPS of Power
- 6:1000 Parking Ratio (Potentially 163 Stalls On Site)
- Large Fenced Yard Area
- 17' Clearance (verify)
- Fire Sprinklered
- Three (3) Dock High Truck Doors (Expandable)
- Ground Level Door Possible
- 254' of Ball Road Frontage
- Immediate Access to Pomona (57) and Santa Ana (5) Freeways



MIKE HEFNER, SIOR
Executive Vice President
714.935.2331
Lic. #00857352
mhefner@voitco.com



DONALD E. KAZANJIAN
President & Principal
909.373.2929
Lic. #00976995
dkazanjian@lee-assoc.com

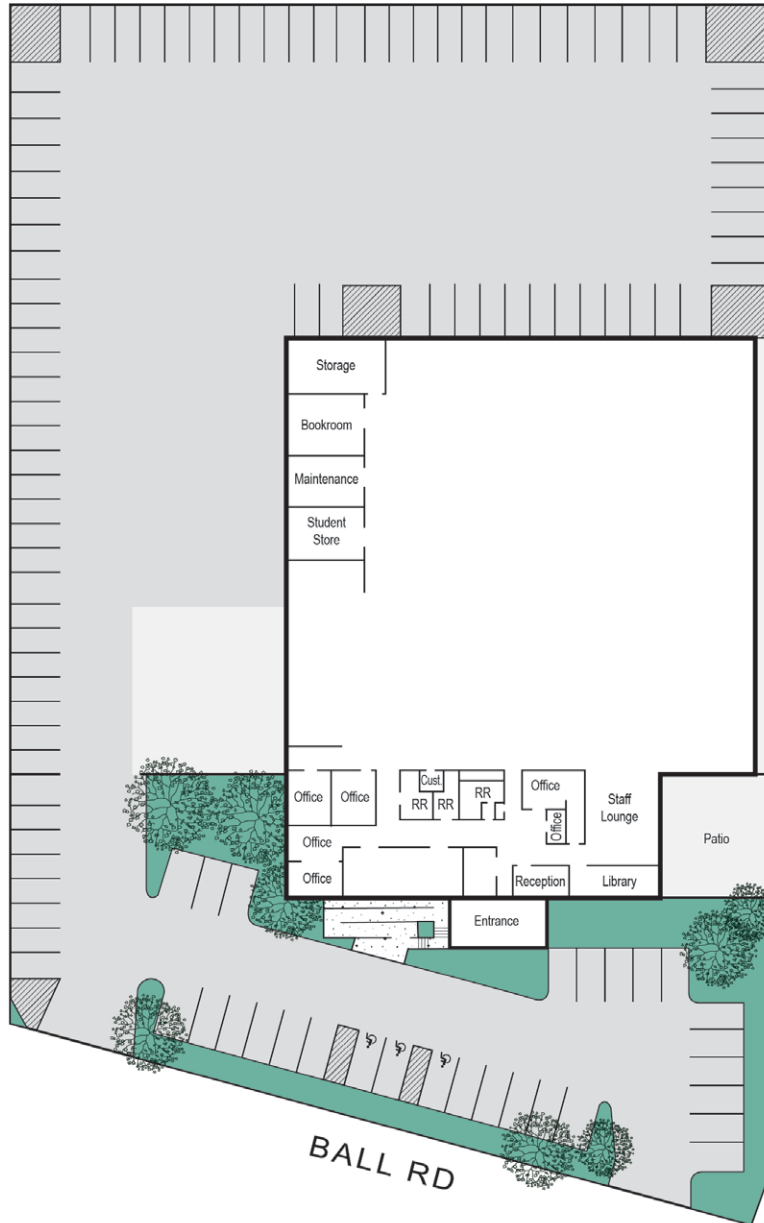


FOR LEASE ±26,094 SF

FREE STANDING INDUSTRIAL BUILDING ON 2.03 ACRES OF LAND

1617 E. Ball Road, Anaheim, CA

SITE PLAN



MIKE HEFNER, SIOR
Executive Vice President
714.935.2331
Lic. #00857352
mhefner@voitco.com



DONALD E. KAZANJIAN
President & Principal
909.373.2929
Lic. #00976995
dkazanjian@lee-assoc.com

