

FOR LEASE

±13,584 SF

16804 Gridley Place, Cerritos, CA

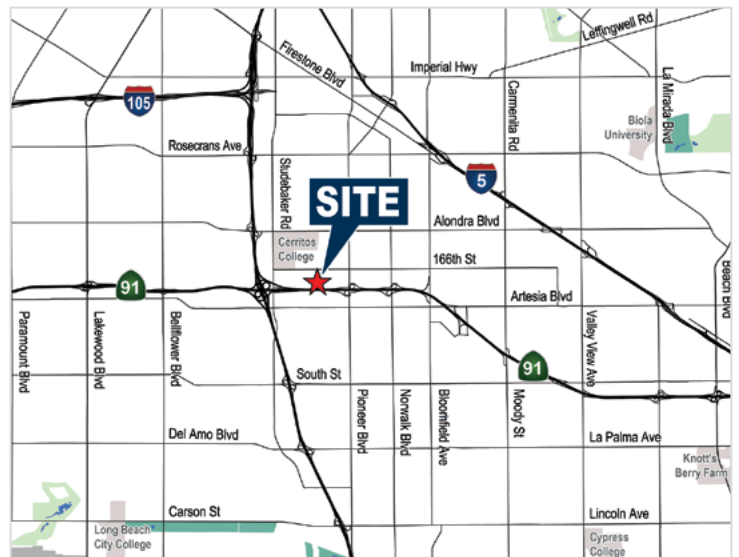
Voit

REAL ESTATE SERVICES



Property Features

- 13,584 Sq. Ft. Part of Larger Distribution Building
- 3,875 Sq. Ft. of Office Space
- 9,709 Sq. Ft. of Warehouse Area
- 3 Dock High Loading Positions
- 1 Grade Level Ramp Can be Added
- 18' Minimum Warehouse Clearance
- Grade Level Loading Possible
- Possible Trailer and Yard Area Storage
- Large Truck Court for Maneuvering
- Fire Sprinklers
- 30 Parking Stalls (Expandable)
- Immediate Access to the 91, 605 and 5 Freeways



MIKE VERNICK, CCIM, SIOR

Senior Vice President
714.935.2354
Lic. #01420885
mvernick@voitco.com

MORGAN HILL

Vice President
949.263.5324
Lic. #01877356
mhill@voitco.com

MIKE HEFNER, SIOR

Executive Vice President
714.935.2331
Lic. #00857352
mhfner@voitco.com

Voit

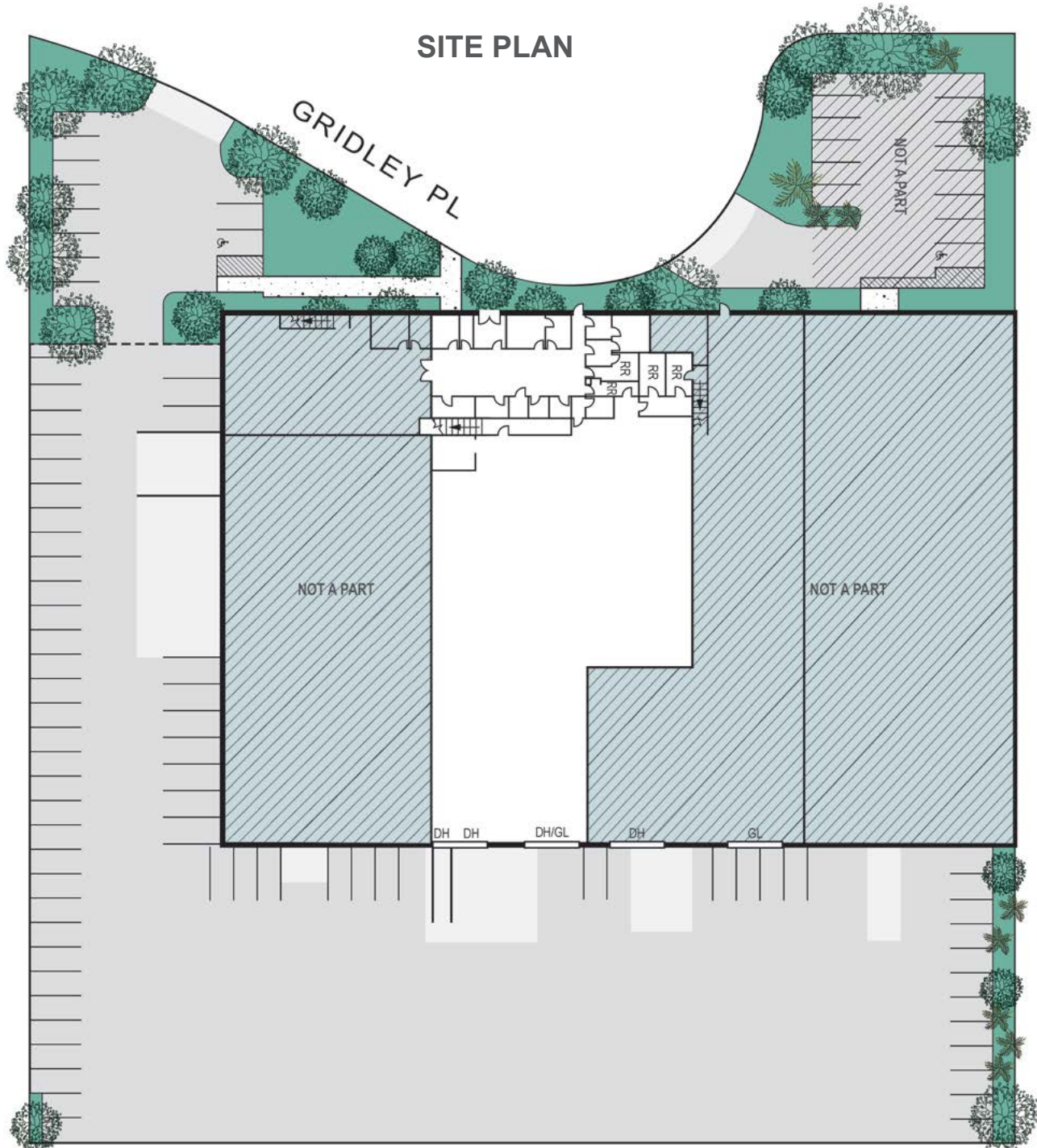
REAL ESTATE SERVICES

**HEFNER
VERNICK
TEAM**

FOR LEASE

±13,584 SF

16804 Gridley Place, Cerritos, CA



MIKE VERNICK, CCIM, SIOR

Senior Vice President
714.935.2354
Lic. #01420885
mvernick@voitco.com

MORGAN HILL

Vice President
949.263.5324
Lic. #01877356
mhill@voitco.com

MIKE HEFNER, SIOR

Executive Vice President
714.935.2331
Lic. #00857352
mhfner@voitco.com

