

# FOR LEASE

1275 N GROVE STREET

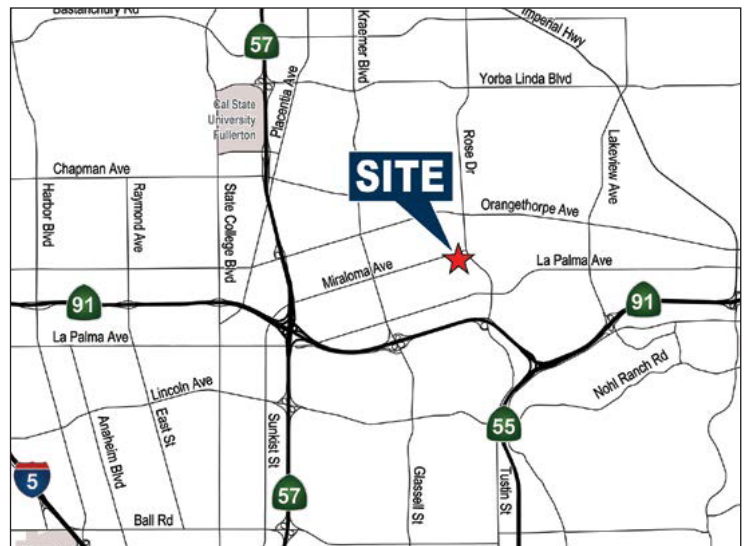
ANAHEIM, CA 92806

±5,000 SF INDUSTRIAL SPACE AVAILABLE



## PROPERTY FEATURES

- 1,372 Sq. Ft. Office (Verify)
- Bonus Storage (Mezzanine)
- 18' Warehouse Clearance
- Two (2) Ground Level Doors
- 2:1 Car Parking
- Fully Sprinklered
- Fenced Yard Area
- Enterprise Zone Benefits
- Excellent 91/55 Freeway Access



### MIKE HEFNER, SIOR

Executive Vice President  
714.935.2331  
MHefner@voitco.com  
Lic. #00857352



### ADAM HILL

Senior Vice President  
714.935.2311  
AHill@voitco.com  
Lic. #01970562

**Voit**

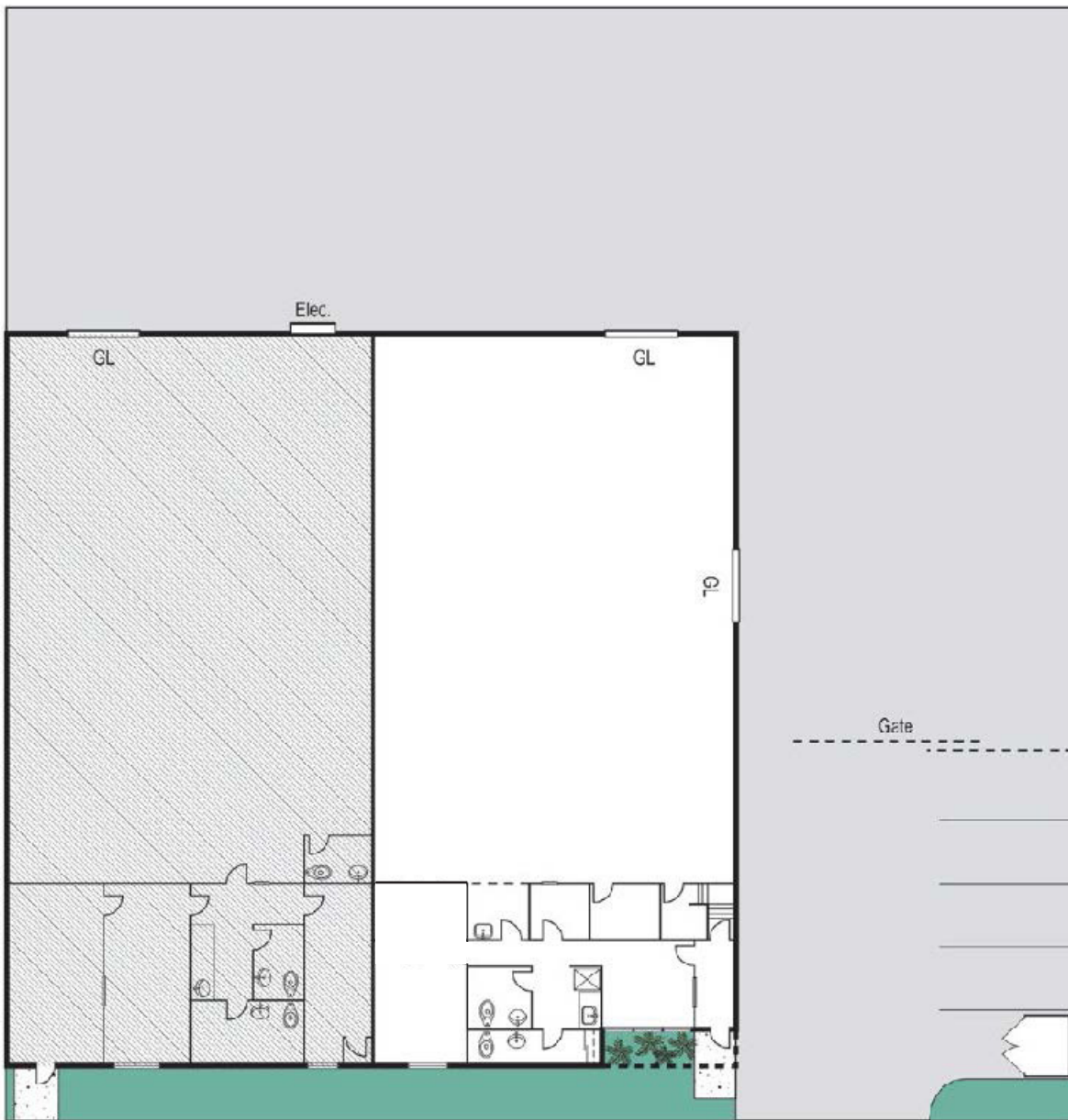
REAL ESTATE SERVICES

2020 Main Street  
Suite 100  
Irvine, CA 92614  
www.VoitCo.com

# SITE PLAN

1275 N GROVE STREET  
ANAHEIM, CA 92806

±5,000 SF INDUSTRIAL SPACE AVAILABLE



GROVE ST



**MIKE HEFNER, SIOR**  
Executive Vice President  
714.935.2331  
MHefner@voitco.com  
Lic. #00857352



**ADAM HILL**  
Senior Vice President  
714.935.2311  
AHill@voitco.com  
Lic. #01970562

**Voit**  
REAL ESTATE SERVICES

2020 Main Street  
Suite 100  
Irvine, CA 92614  
www.VoitCo.com